



Evolution in a Changing Industry Environment

**30 Years of Brisbane Transfer & Resource Recovery
The Start, The Changes & The Future**



30 YEARS AGO - 1991

- Population - 1.4M (Greater Brisbane)
 - 740,000 (BCC)
- Waste System
 - 8 main operating landfills
 - recovery systems - glass
 - metals
 - paper/card
- Waste stream - largely unmeasured
- Disposal operator – Brisbane City Council



30 YEARS AGO - 1991

How did the “step change” start?

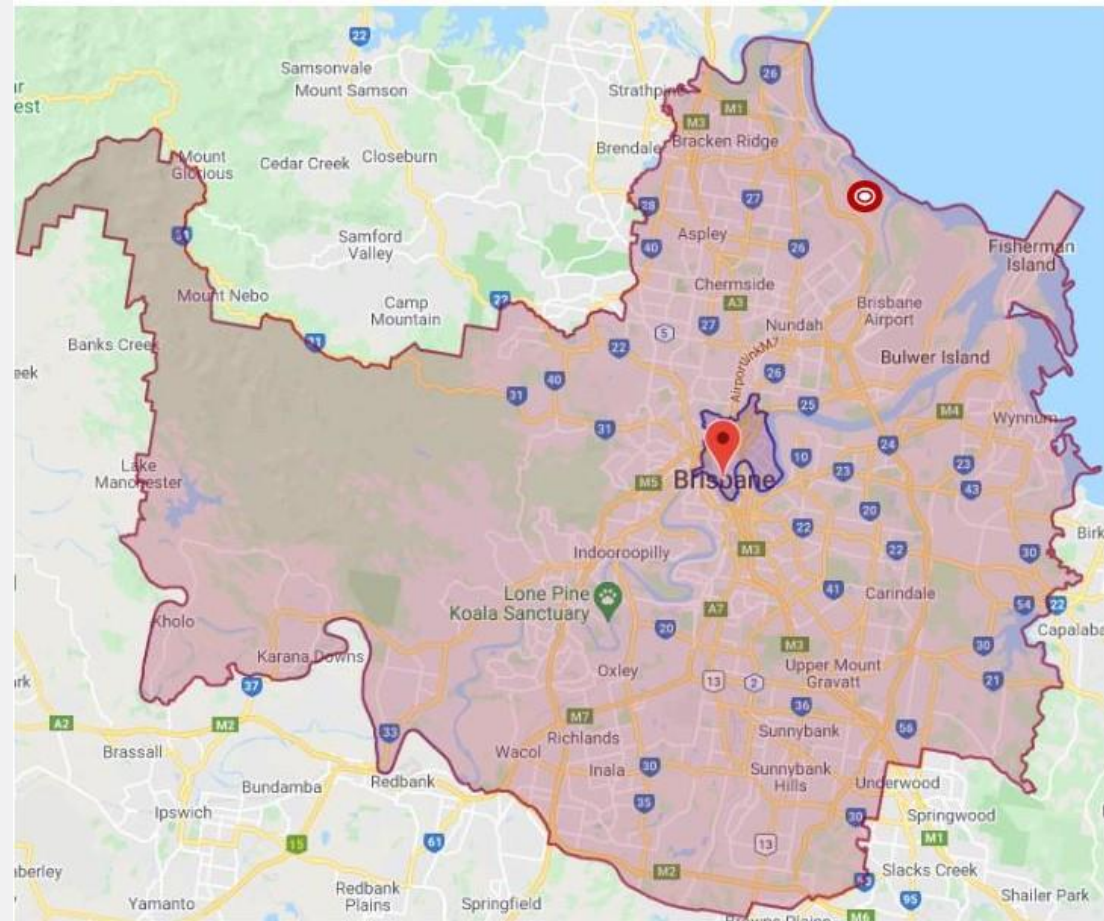
- 1988/89 - Council tender for new system
- Aims - public safety & convenience
 - efficient waste handling/transport
 - environmental improvement
- Negotiated with 3 tenderers
- 1991 – Contract signed – Pacific Waste Management (now Suez)
- 1991 - Election issue
- 1993 – Commenced operation



30 YEARS AGO - 1991

How did the “step change” start?

- 1988/89 - Council tender for new system
- Aims - public safety & convenience
 - efficient waste handling/transport
 - environmental improvement
- Negotiated with 3 tenderers
- 1991 – Contract signed – Pacific Waste Management (now Suez)
- 1991 - Election issue
- 1993 – Commenced operation



30 YEARS AGO - 1991

How did the “step change” start?

- 1988/89 - Council tender for new system
- Aims - public safety & convenience
 - efficient waste handling/transport
 - environmental improvement
- Negotiated with 3 tenderers
- 1991 – Contract signed – Pacific Waste Management (now Suez)
- 1991 - Election issue
- 1993 – Commenced operation



30 YEARS AGO - 1991

How did the “step change” start?

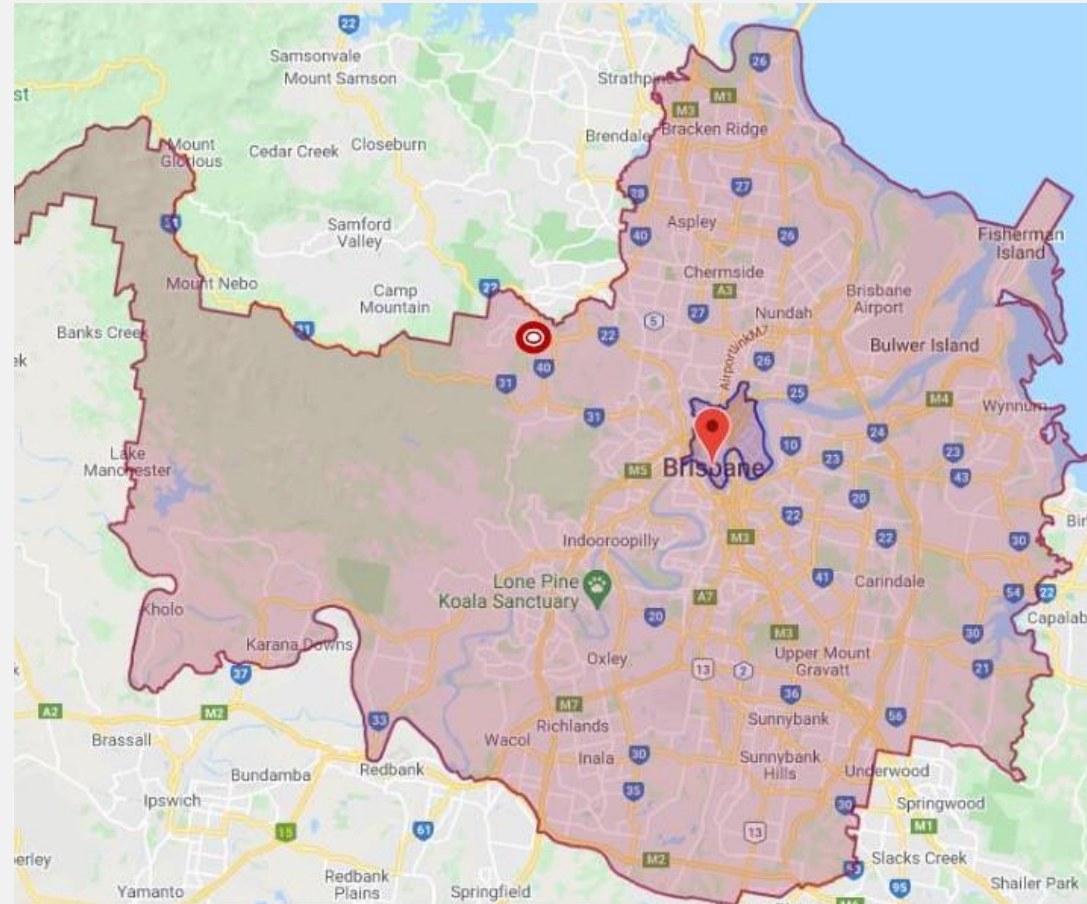
- 1988/89 - Council tender for new system
- Aims - public safety & convenience
 - efficient waste handling/transport
 - environmental improvement
- Negotiated with 3 tenderers
- 1991 – Contract signed – Pacific Waste Management (now Suez)
- 1991 - Election issue
- 1993 – Commenced operation



30 YEARS AGO - 1991

How did the “step change” start?

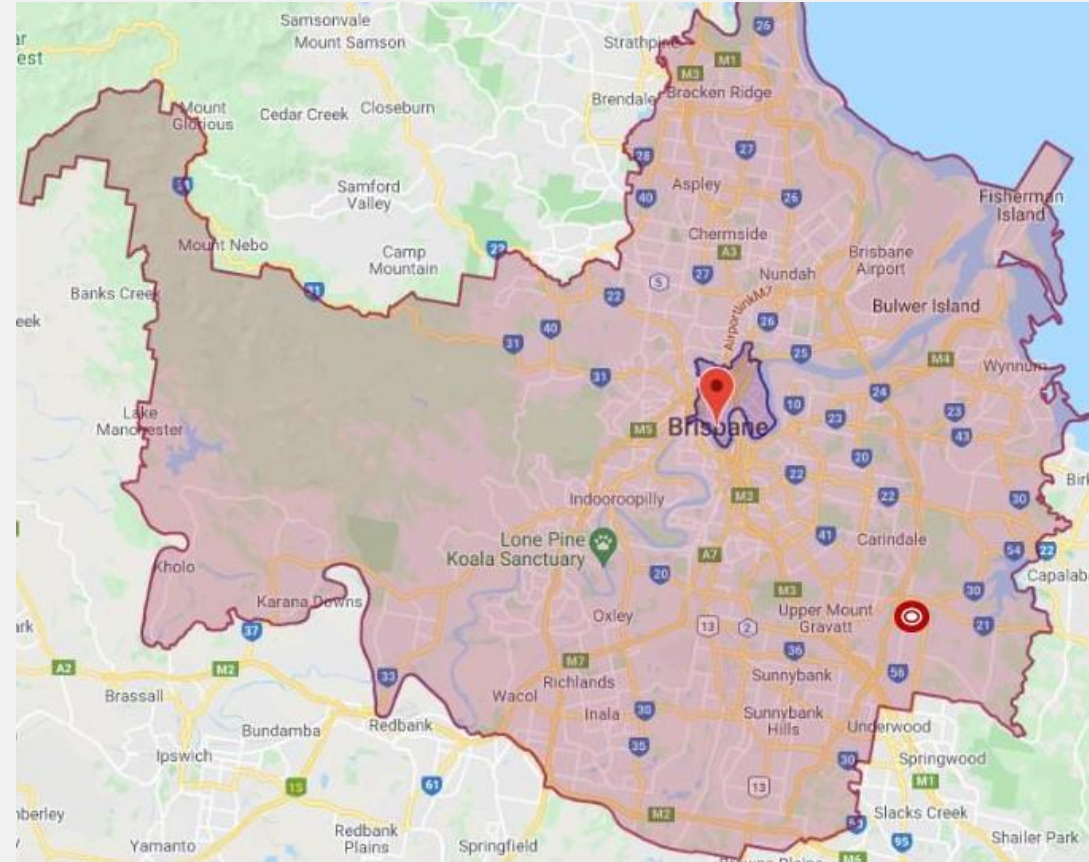
- 1988/89 - Council tender for new system
- Aims - public safety & convenience
 - efficient waste handling/transport
 - environmental improvement
- Negotiated with 3 tenderers
- 1991 – Contract signed – Pacific Waste Management (now Suez)
- 1991 - Election issue
- 1993 – Commenced operation



30 YEARS AGO - 1991

How did the “step change” start?

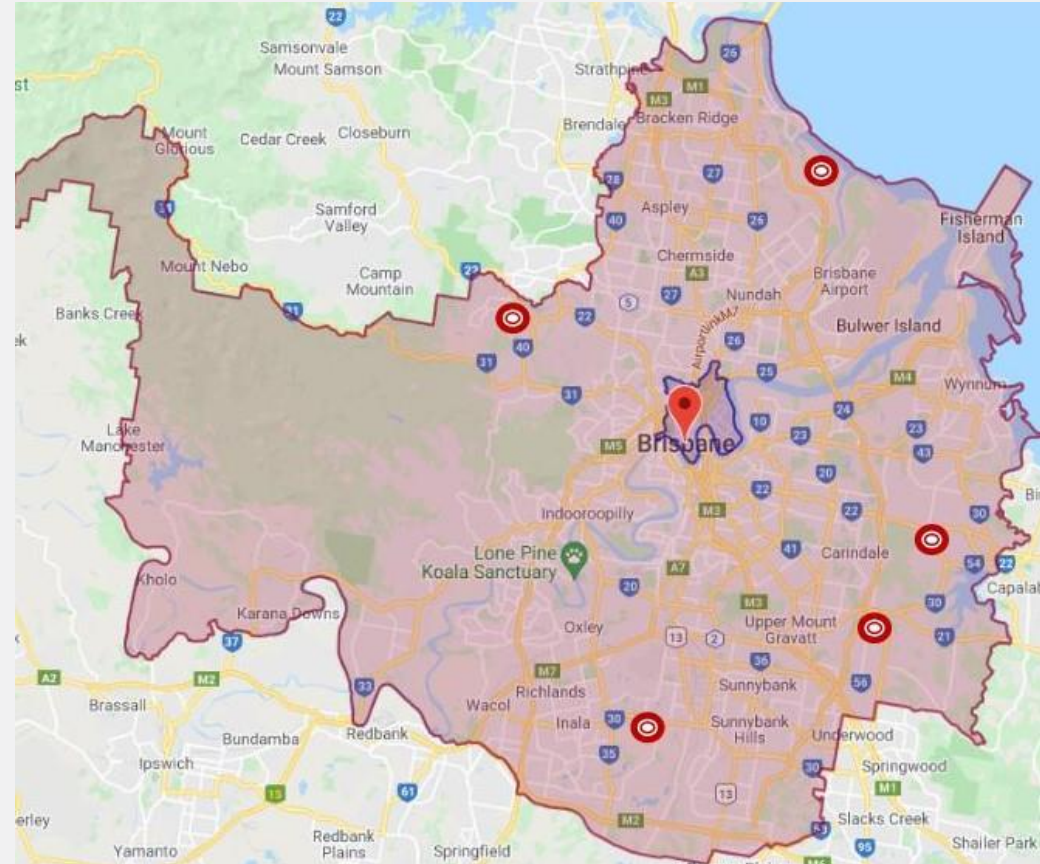
- 1988/89 - Council tender for new system
- Aims - public safety & convenience
 - efficient waste handling/transport
 - environmental improvement
- Negotiated with 3 tenderers
- 1991 – Contract signed – Pacific Waste Management (now Suez)
- 1991 - Election issue
- 1993 – Commenced operation



30 YEARS AGO - 1991

How did the “step change” start?

- 1988/89 - Council tender for new system
- Aims - public safety & convenience
 - efficient waste handling/transport
 - environmental improvement
- Negotiated with 3 tenderers
- 1991 – Contract signed – Pacific Waste Management (now Suez)
- 1991 - Election issue
- 1993 – Commenced operation



25 YEARS AGO - 1996

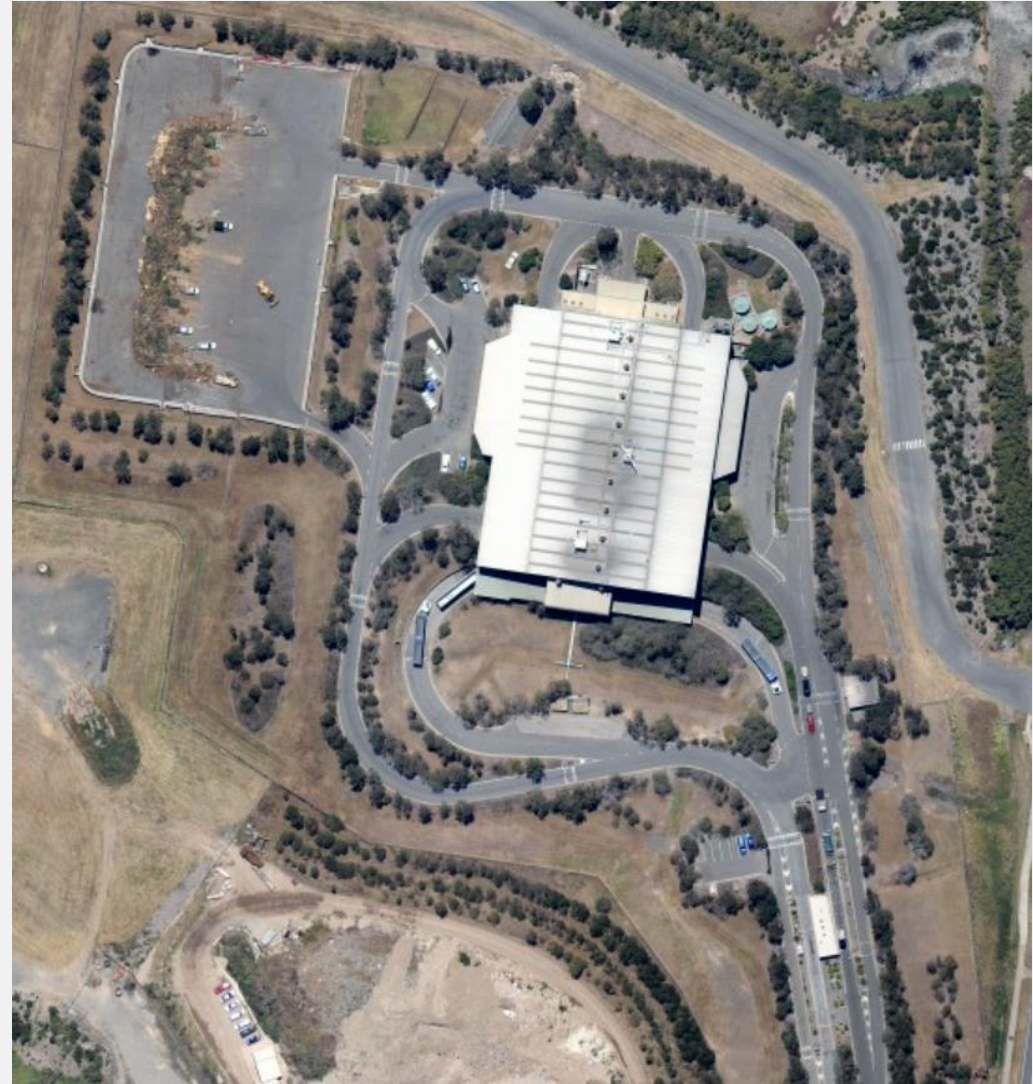
The initial changes

- Functional improvements
- Throughput 600,000 t/a



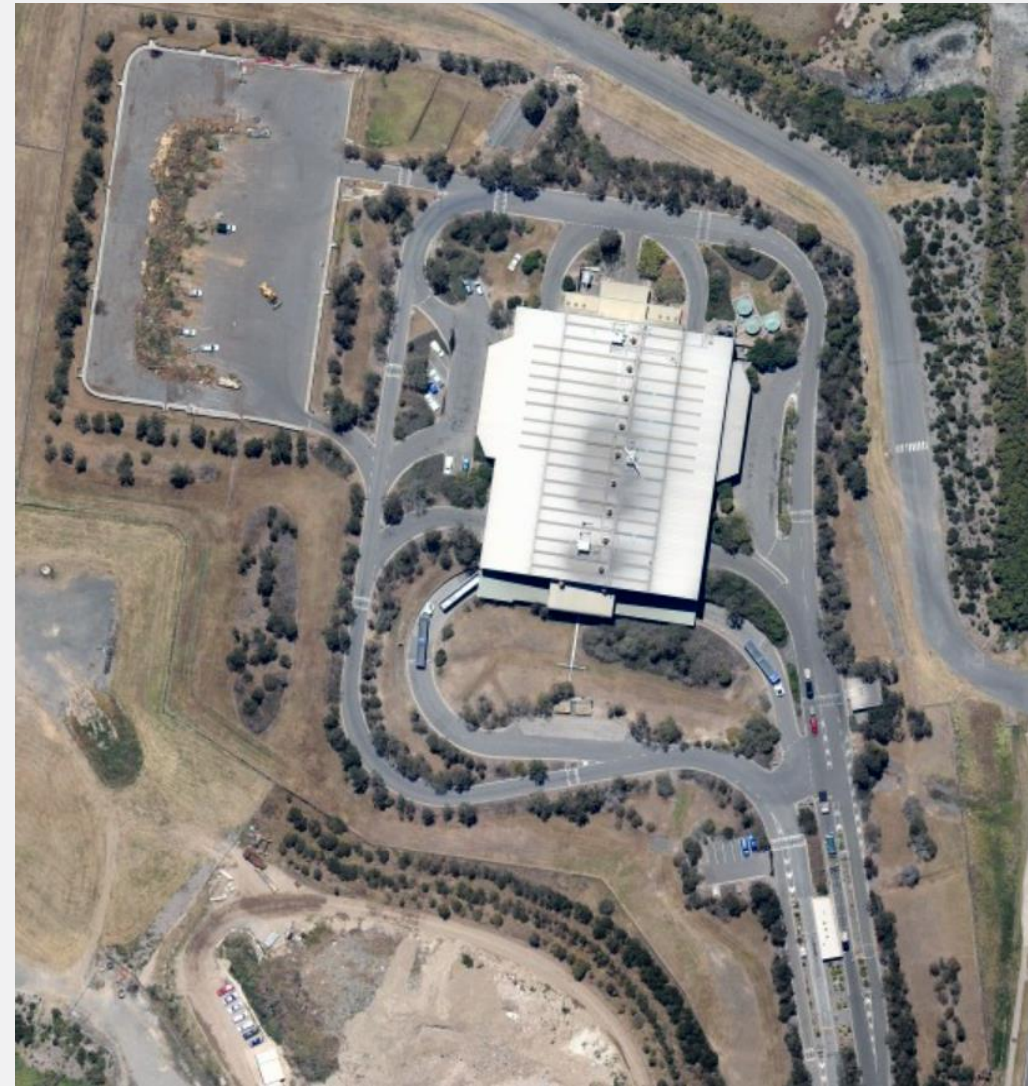
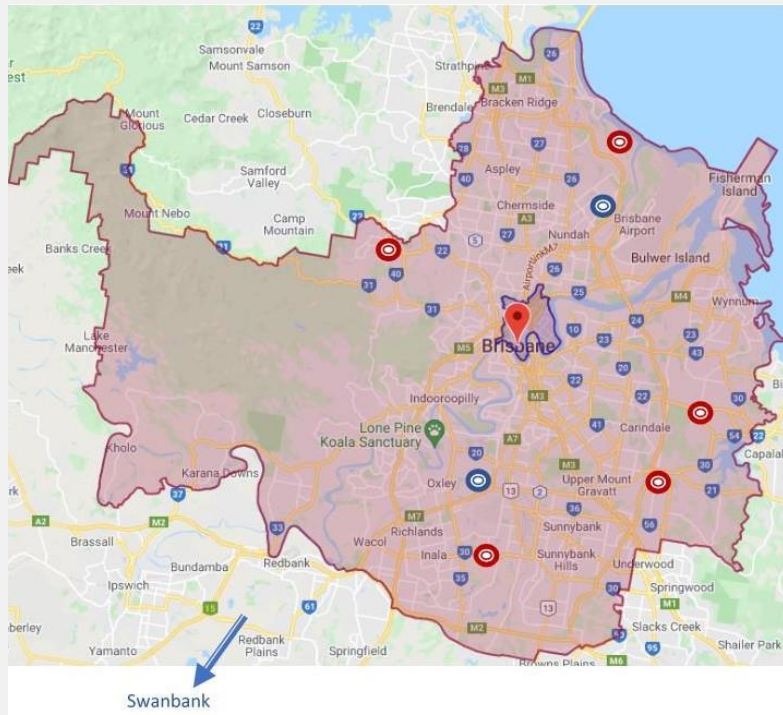
20 YEARS AGO - 2001

- Population 1.7M (Greater Brisbane)
 880,000 (BCC)
- Throughput - 450,000 t/a
- What happened to the missing tonnes?



20 YEARS AGO - 2001

- Population 1.7M (Greater Brisbane)
880,000 (BCC)
- Throughput - 450,000 t/a
- What happened to the missing tonnes
- Disposal Operator - Thies Services (2005)



20 YEARS AGO - 2001

The initial changes

- Safety improvements
- Improved recovery trials



10 YEARS AGO - 2011

- Population
 - 2.1M (Gr Bne)
 - 1,080,000 (BCC)
- Disposal Operator
 - Thiess Services
- 2012 - Operations taken over by Remondis
- 2015 - Resource Recovery focus formalised



NOW - 2021

- Population 2.6M (Gr Bne)
 1,280,000 (BCC)
- Recovery Includes: All priority materials
- Post Collections Operator: Cleanaway
- Stood test of time
- Would we do this again?
- Is this suitable everywhere?



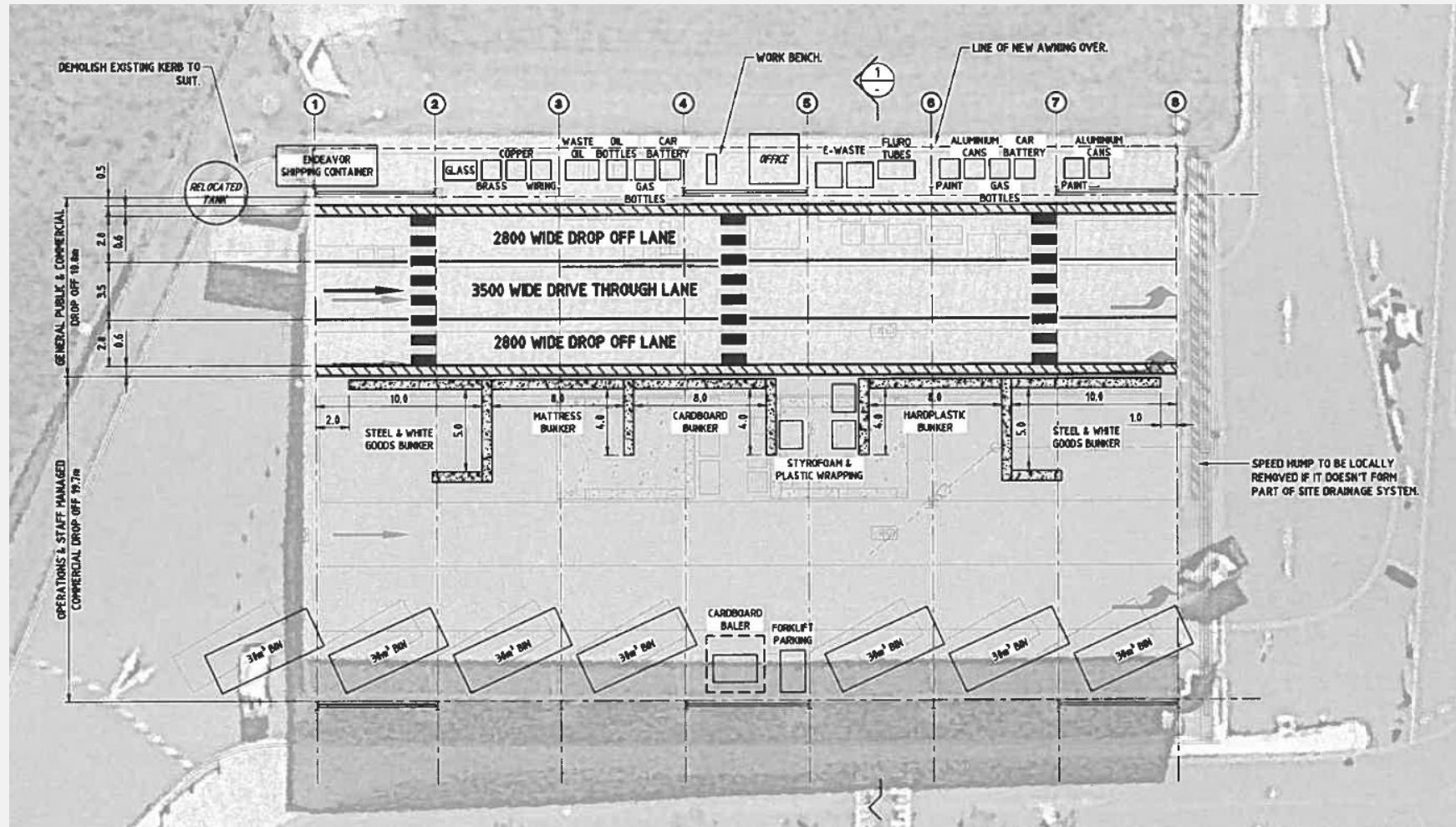
NOW - 2021

- Population 2.6M (Gr Bne)
 1,280,000 (BCC)
- Recovery Includes: All priority materials
- Post Collections Operator: Cleanaway
- Stood test of time
- Would we do this again?
- Is this suitable everywhere?



NOW - 2021

- Transfer Efficiency
- Operational Efficiency



NOW - 2021

- Asset condition review



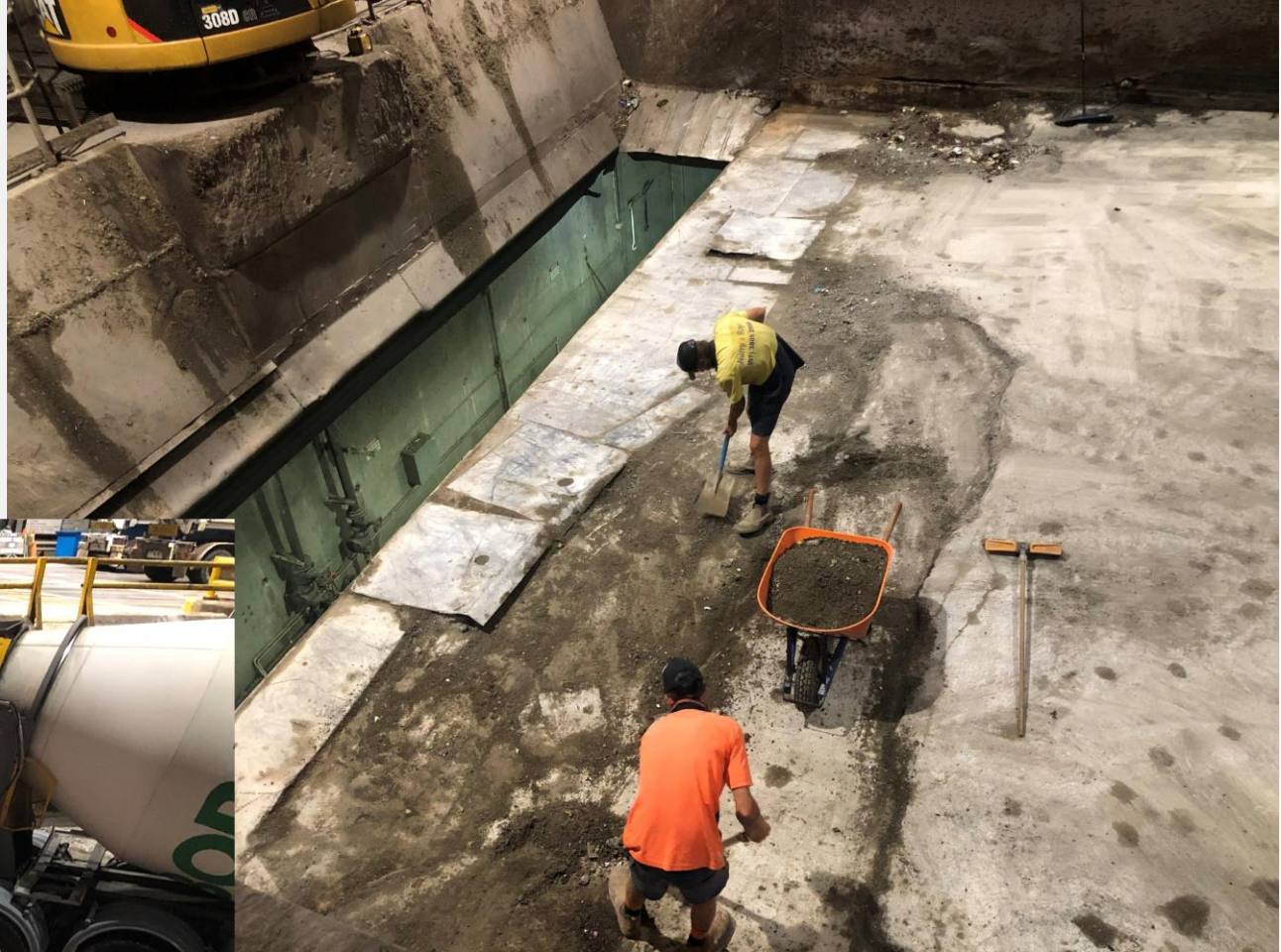
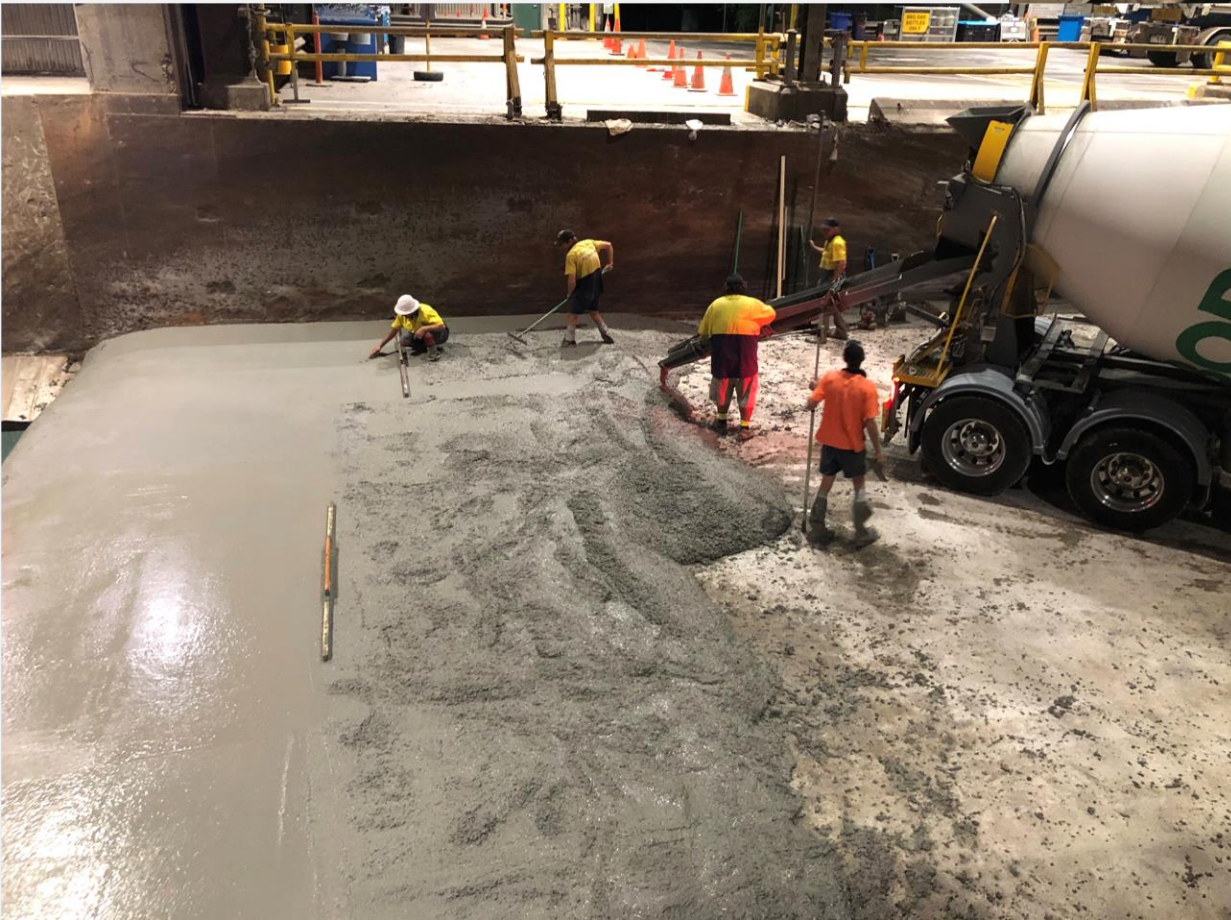
NOW - 2021

- Tipping Floors



NOW - 2021

- Surge Pit Floors



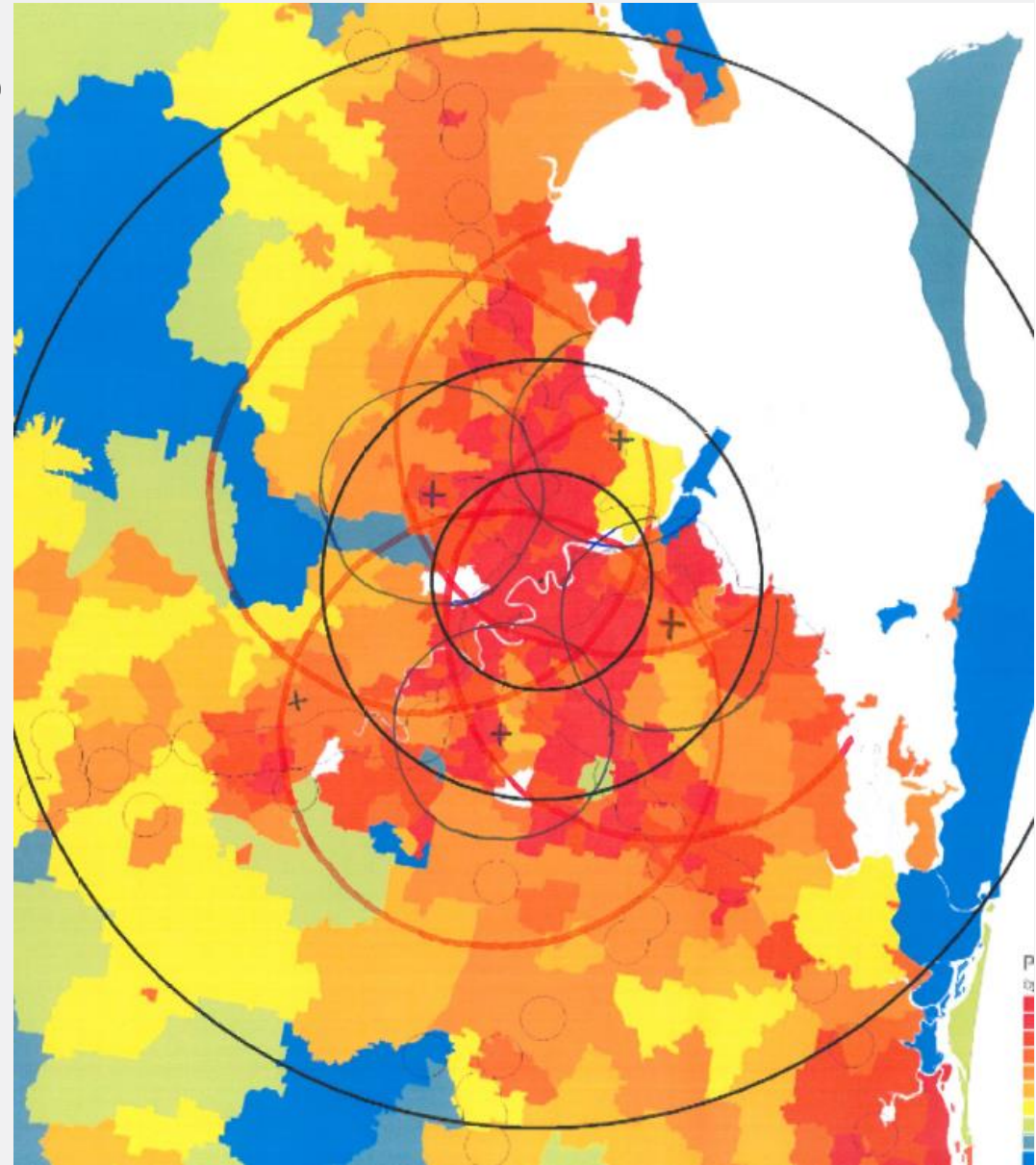
NOW - 2021

- Surge Pit Wall Linings

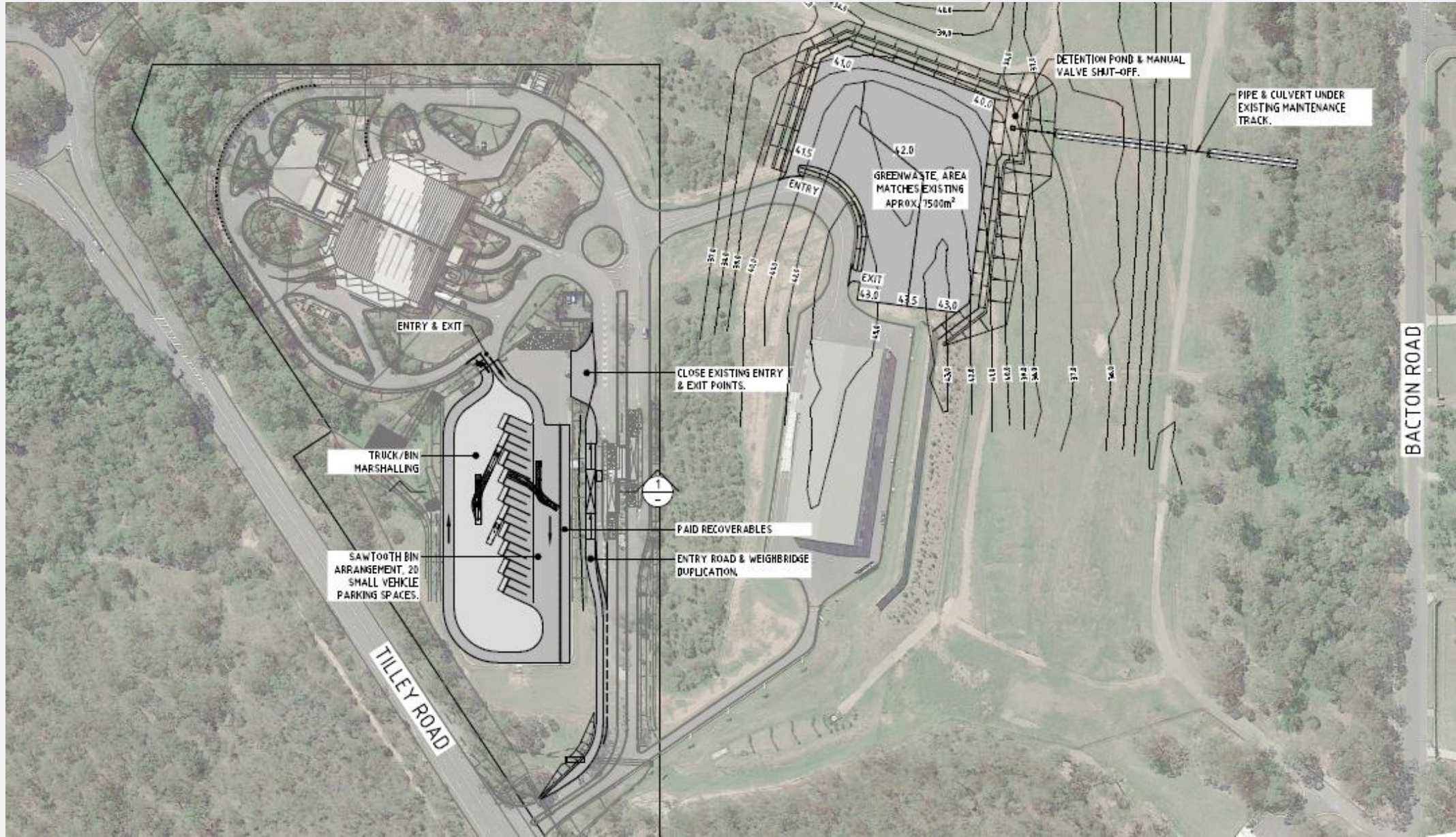


FUTURE - 2031

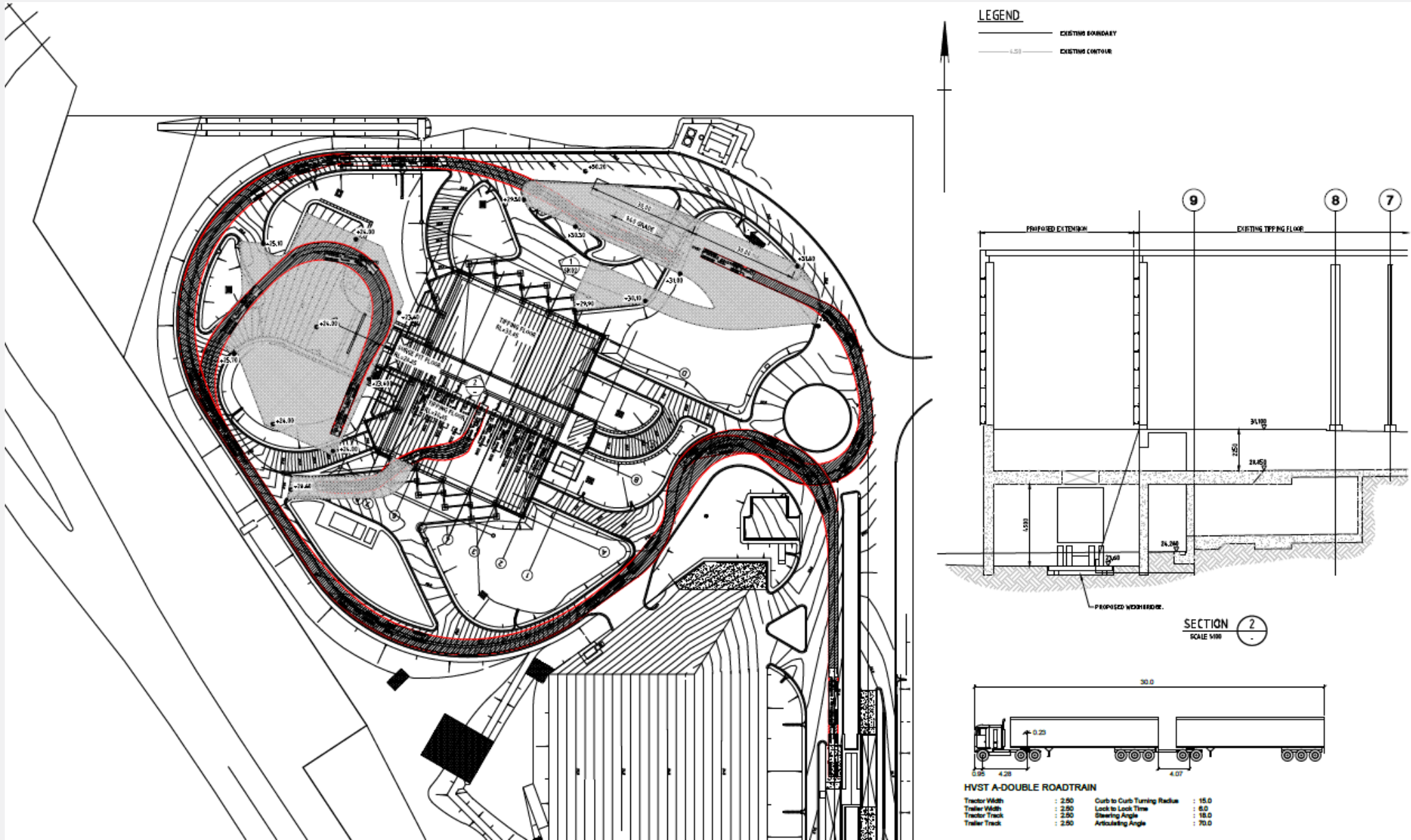
- Population 3.1M (Greater Brisbane)
 1,400,000 (BCC)
- Post Collections Operator: Cleanaway
 (2 more years)
- Rochedale Landfill closed
- Recovery Streams - Traditional
 - FOGO
 - Hardwaste
- Additional Facility?



FUTURE



FUTURE



CONCLUSION

